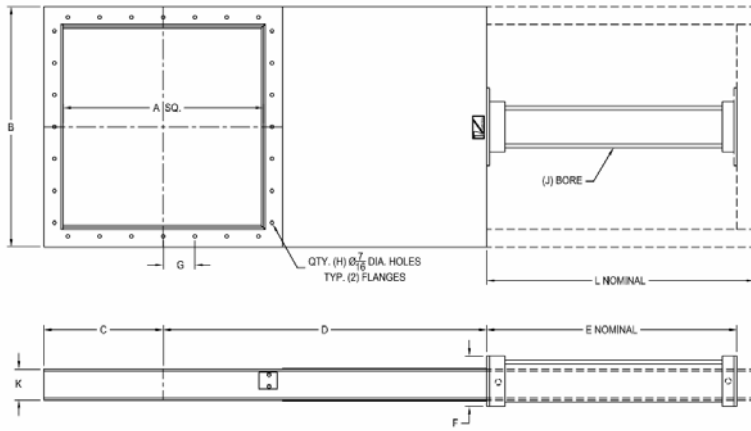


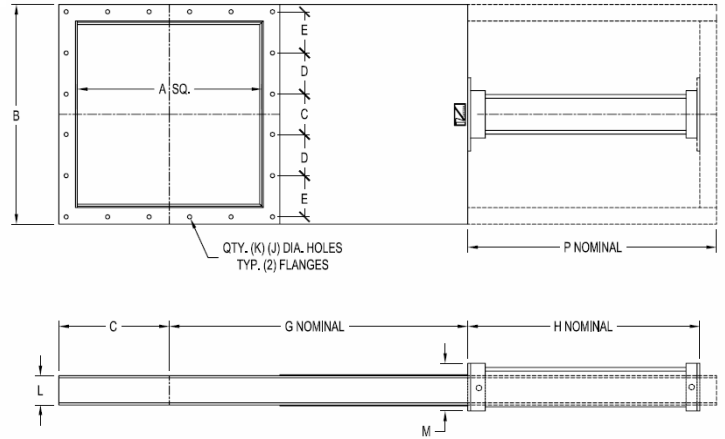
# VORTEX® ROLLER GATE™ DIMENSIONAL INFORMATION

All dimensions are in inches.

## Standard Bolt Pattern



## CEMA Bolt Pattern



Information subject to change without notice.

STANDARD ITEM ID	CONVEYOR DIAMETER	GATE SIZE A	B	C	D	E	F	G	H	J	K	L	M	P	APPROX WEIGHT
S06	-	6	10	5	12	11	4.5	4.13	8	3.5	3	-	-	-	32 LBS
S08	-	8	12	6	15	13	4.5	3.5	12	3.5	3	-	-	-	37 LBS
S10	-	10	14	7	18	15	4.5	4.5	12	3.5	3	-	-	-	45 LBS
S12	-	12	16	8	21	17	4.5	2.75	20	3.5	3	-	-	-	49 LBS
S14	-	14	18	9	24	19	4.5	3.25	20	3.5	3	-	-	-	59 LBS
S16	-	16	20	10	27	21	5.5	3.75	20	4.5	3	-	-	-	74 LBS
S18	-	18	22	11	30	23	5.5	4.25	20	4.5	3	-	-	-	84 LBS
S20	-	20	24	12	33	25	5.5	3	28	4.5	3	-	-	-	99 LBS
S22	-	22	26	13	36	27	5.5	3.5	28	4.5	3	-	-	-	140 LBS
S24	-	24	29	14.5	39	-	5.5	3.75	28	5	4	32	-	-	170 LBS
S30	-	30	35	17.5	48	-	5.5	3.63	36	5	4	37.75	-	-	200 LBS
CEMA ITEM ID	CONVEYOR DIAMETER	GATE SIZE A	B	C	D	E	F	G	H	J	K	L	M	P	APPROX WEIGHT
S07	6	7	11	3	-	2.81	5.5	13.5	12	.44	12	3	4.5	-	37 LBS
S09	9	10	14	4	-	4	7	18	15	.44	12	3	4.5	-	45 LBS
S11	10	11	15	3.38	-	4.31	7.5	19.5	16	.44	12	3	4.5	-	47 LBS
S13	12	13	17	5.25	-	5.13	8.5	22.5	18	.44	12	3	4.5	-	51 LBS
S15	14	15	19	3.5	3.5	3.5	9.5	25.5	20	.44	20	3	4.5	-	64 LBS
S17	16	17	21	4	4	3.75	10.5	28.5	22	.44	20	3	5.5	-	84 LBS
S19	18	19	23	4.38	4.38	4.44	11.5	31.5	24	.56	20	3	5.5	-	94 LBS
S21	20	21	25	4.75	4.75	4.88	12.5	34.5	26	.56	20	3	5.5	-	106 LBS
S25	24	25	30	5.5	5.63	5.63	15	40.5	-	.56	20	4	5.5	33.75	170 LBS

## VALVE MODIFICATIONS

S	FOR 316L STAINLESS STEEL MATERIAL CONTACT.
MG	MAGNETIC RING AIR CYLINDER ACTIVATES MAGNETIC REED POSITION INDICATION SWITCH.
HT3	APPLICATIONS REQUIRING 250° F CONTINUOUS SERVICE TO 300° F INTERMITTENT SERVICE.
HT4	APPLICATIONS REQUIRING 400° F CONTINUOUS SERVICE TO 450° F INTERMITTENT SERVICE.
WS	INCORPORATES AN ELECTRO-POLISHED BLADE AND PET PRESSURE PLATE SEALS FOR HANDLING STICKY MATERIALS OR APPLICATIONS THAT REQUIRE WATER WASHDOWN.
HS	HARDENED STEEL ROLLERS REPLACE NYLON ROLLERS AND BONNET SEAL PROTECTORS ARE ADDED.
RS	REMOVABLE SEAL ACCESS PORTS FOR EASY ACCES TO BONNET SEALS WHILE VALVE REMAINS IN SERVICE

## ACCESSORIES

- PRE-WIRED PUSH BUTTON CONTROL PANEL
- NEMA 4, NEMA 7/9, OR ATEX RATED DOUBLE OR SINGLE SOLENOIDS
- HAND CRANK, CHAIN WHEEL, ELECTRIC, OR AIR ACTUATION
- MECHANICAL, PROXIMITY, OR MAGNETIC REED INDICATION SWITCHES
- VENTED BALL VALVE
- FRAME AVAILABLE IN ALUMINUM, CARBON STEEL, OR STAINLESS STEEL

Copyright©2006 Salina Vortex® Corporation. All Rights Reserved. RG09-2006.

**For more information, please contact Vortex® at 1.888.829.7821 or visit our website at [www.vortexvalves.com](http://www.vortexvalves.com).**