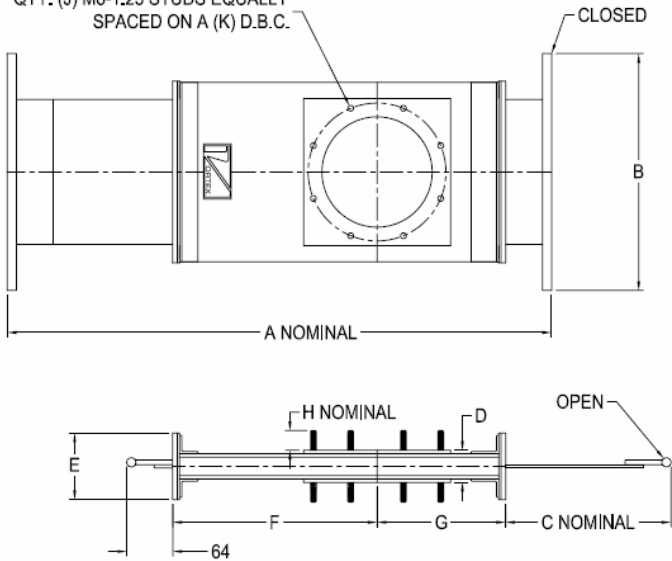


VORTEX[®] HAND SLIDE ORIFICE GATE™ DIMENSIONAL INFORMATION

All dimensions are in millimeters.

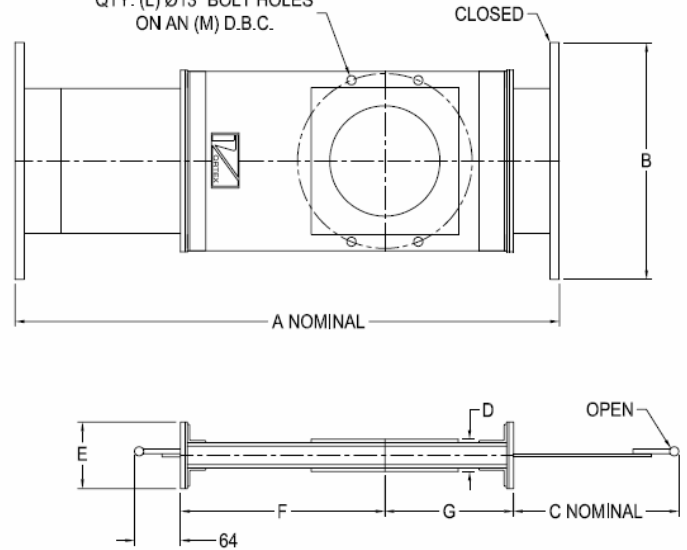
STUD BOLT FLANGED TUBE CONNECTION

QTY. (J) M8-1.25 STUDS EQUALLY SPACED ON A (K) D.B.C.



OPTIONAL (-P) MODIFICATION BOLT-THROUGH PIPE FLANGE CONNECTION

QTY. (L) Ø13" BOLT HOLES ON AN (M) D.B.C.



Information subject to change without notice.

ITEM ID	GATE SIZE	A	B	C	D	E	F	G	H	J	K	L	M	APPROX. WEIGHT	NOMINAL FLOW RATE
HS50	50	412	225	127	44	92	123	98	28	101	98	50	120	4 KG	150 CF/H
HS80	76	476	257	152	44	92	158	114	28	101	127	50	152	5 KG	450 CF/H
HS100	101	574	282	180	44	92	203	127	28	152	139	101	190	7 KG	800 CF/H
HS125	127	676	307	203	44	92	269	152	28	203	165	101	215	9 KG	1200 CF/H
HS150	152	752	327	228	44	92	282	177	28	203	190	101	241	12 KG	1900 CF/H
HS200	203	901	377	279	44	92	358	200	28	203	241	101	298	15 KG	4000 CF/H
HS250	254	1057	428	330	44	92	438	225	31	203	292	101	361	27 KG	7000 CF/H
HS300	304	1206	479	381	41	120	511	250	31	304	350	101	431	32 KG	12200 CF/H

VALVE MODIFICATIONS

SC	304 STAINLESS STEEL BLADE AND GATE LINER, 440 STAINLESS STEEL ROLLERS, 304 OR 18-8 STAINLESS STEEL ROLLER STUD BOLTS.
WS1	INCORPORATES AN ELECTRO-POLISHED BLADE AND PET PRESSURE PLATE SEALS FOR HANDLING STICKY MATERIALS OR APPLICATIONS THAT REQUIRE WATER WASHDOWN.
HT3	APPLICATIONS REQUIRING 250° F CONTINUOUS SERVICE TO 300° F INTERMITTENT SERVICE.
HT4	APPLICATIONS REQUIRING 400° F CONTINUOUS SERVICE TO 450° F INTERMITTENT SERVICE.
P	INLET AND OUTLET FLANGES DRILLED FOR ANSI BOLT HOLE PATTERN.
H SERIES	ALUMINUM MATERIAL CONTACT.
F SERIES	304 STAINLESS STEEL MATERIAL CONTACT.