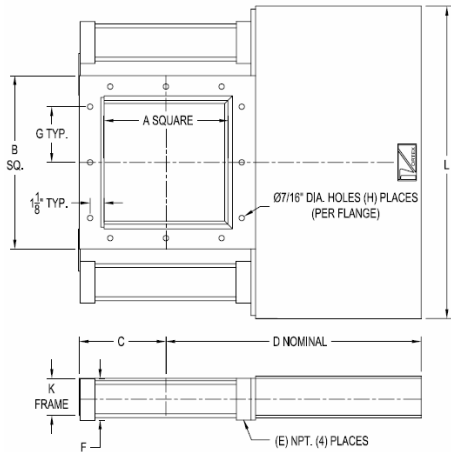


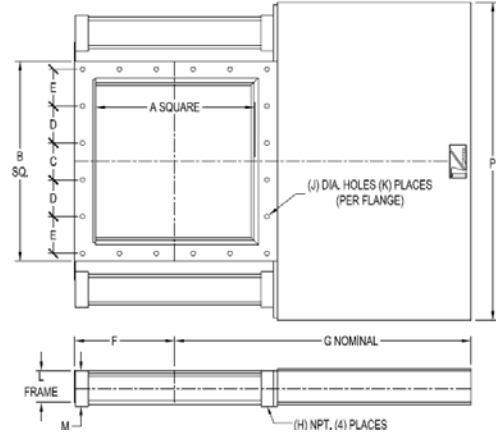
VORTEX® DUAL CYLINDER ROLLER GATE™ DIMENSIONAL INFORMATION

All dimensions are in inches.

Standard Bolt Pattern



CEMA Bolt Pattern



Information subject to change without notice.

STANDARD ITEM ID	GATE SIZE A	B	C	D	E	F	G	H	J	K	L	M	P	APPROX WEIGHT
SD06	6	10	5	14.63	.38	3.38	4.13	8	-	3	21.25	-	-	40 LBS
SD08	8	12	6	17.63	.38	3.38	3.5	12	-	3	22.25	-	-	45 LBS
SD10	10	14	7	20.63	.38	3.38	4.5	12	-	3	25.25	-	-	50 LBS
SD12	12	16	8	23.63	.38	3.38	2.75	20	-	3	27.25	-	-	60 LBS
SD14	14	18	9	26.63	.38	3.38	3.25	20	-	3	29.25	-	-	65 LBS
SD16	16	20	10.63	30.25	.5	4.13	3.75	20	-	3	32.75	-	-	80 LBS
SD18	18	22	11.63	33.25	.5	4.13	4.25	20	-	3	34.75	-	-	90 LBS
SD20	20	24	12.63	36.25	.5	4.13	3	28	-	3	36.75	-	-	105 LBS
SD22	22	26	13.63	39.25	.5	4.13	3.5	28	-	3	38.75	-	-	115 LBS
SD24	24	29	14.5	42.88	.5	5.13	3.75	28	-	4	44.25	-	-	125 LBS
SD30	30	35	17.5	51.88	.5	5.13	3.63	36	-	4	50.25	-	-	175 LBS
CEMA ITEM ID	GATE SIZE A	B	C	D	E	F	G	H	J	K	L	M	P	APPROX WEIGHT
SD07	7	11	3	-	2.81	5.5	16.13	.38	.44	12	3	3.38	22.25	42 LBS
SD09	10	14	4	-	4	7	20.63	.38	.44	12	3	3.38	25.25	47 LBS
SD11	11	15	4.38	-	4.31	7.5	22.13	.38	.44	12	3	3.38	26.25	55 LBS
SD13	13	17	5.25	-	5.13	8.5	25.13	.38	.44	12	3	3.38	28.25	62 LBS
SD15	15	19	3.5	3.5	3.5	9.5	28.13	.38	.44	20	3	3.38	30.25	72 LBS
SD17	17	21	4	4	3.75	11.13	31.75	.5	.44	20	3	4.13	33.25	85 LBS
SD19	19	23	4.38	4.38	4.44	12.13	34.75	.5	.56	20	3	4.13	35.75	97 LBS
SD21	21	25	4.75	4.75	4.88	13.13	37.25	.5	.56	20	3	4.13	37.75	100 LBS
SD25	25	30	5.5	5.63	5.63	15	44.38	.5	.56	20	4	5.13	45.25	130 LBS

VALVE MODIFICATIONS

S	FOR 316L STAINLESS STEEL MATERIAL CONTACT.
MG	MAGNETIC RING AIR CYLINDER PISTON ACTIVATES MAGNETIC REED POSITION INDICATION SWITCH.
HT3	APPLICATIONS REQUIRING 250° F CONTINUOUS SERVICE TO 300° F INTERMITTENT SERVICE.
HT4	APPLICATIONS REQUIRING 400° F CONTINUOUS SERVICE TO 450° F INTERMITTENT SERVICE.
WS	INCORPORATES AN ELECTRO-POLISHED BLADE AND PET PRESSURE PLATE SEALS FOR HANDLING STICKY MATERIALS OR APPLICATIONS THAT REQUIRE WATER WASHDOWN.
HS	HARDENED STEEL ROLLERS REPLACE NYLON ROLLERS AND BONNET SEAL PROTECTORS ARE ADDED.

ACCESSORIES

- PRE-WIRED PUSH BUTTON CONTROL PANEL
- NEMA 4, NEMA 7/9, OR ATEX RATED DOUBLE OR SINGLE SOLENOIDS
- HAND CRANK, CHAIN WHEEL, ELECTRIC, OR AIR ACTUATION
- MECHANICAL, PROXIMITY, OR MAGNETIC REED INDICATION SWITCHES
- VENTED BALL VALVE
- FRAME AVAILABLE IN ALUMINUM, CARBON STEEL, OR STAINLESS STEEL