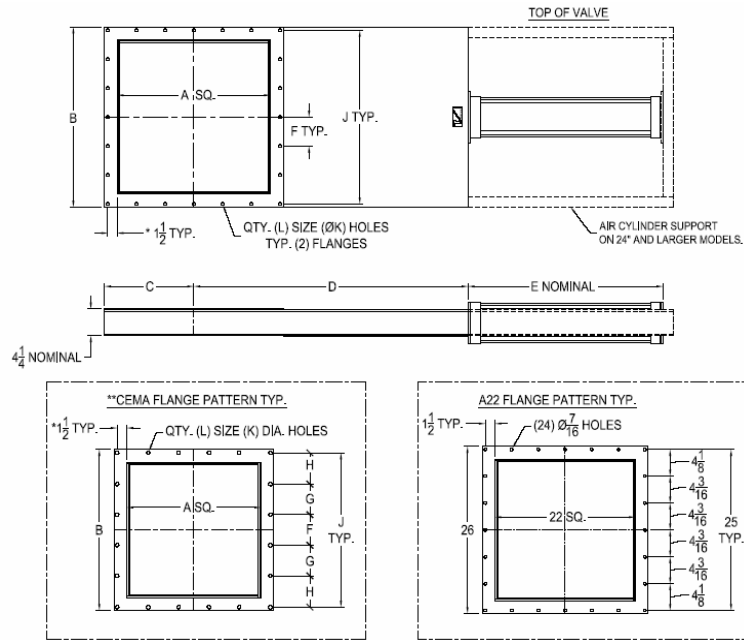


VORTEX® AGGREGATE GATE™ (AIR CYLINDER ACTUATOR) DIMENSIONAL INFORMATION

All dimensions are in inches.



Information subject to change without notice.

ITEM ID	A	B	C	D	E	F	G	H	J	K	L	APPROX WEIGHT
A06	6	10	5	16	11	4-1/2	-	-	9	7/16	8	65 LBS
A07	7	11	5-1/2	17	11-3/8	5	-	-	10	7/16	8	70 LBS
A08	8	12	6	19	13	5-1/2	-	-	11	7/16	8	75 LBS
A09	9	13	6-1/2	20-1/2	13-7/8	3	-	-	12	7/16	16	85 LBS
A10	10	14	7	22	15	3-1/4	-	-	13	7/16	16	95 LBS
A11	11	15	7-1/2	23-1/2	15-15/16	3-1/2	-	-	14	7/16	16	105 LBS
A12	12	16	8	25	17	3-3/4	-	-	15	7/16	16	110 LBS
A13	**13	17	8-1/2	26-1/2	18	5-1/4	-	5-1/8	15-1/2	7/16	12	130 LBS
A14	14	18	9	28	19-1/4	4-1/4	-	-	17	7/16	16	150 LBS
A15	**15	19	9-1/2	29-1/2	20-1/4	3-1/2	3-1/2	3-1/2	17-1/2	7/16	20	170 LBS
A16	16	20	10	31	21-1/4	4-3/4	-	-	19	7/16	16	190 LBS
A17	**17	21	10-1/2	32-1/2	22-1/4	4	4	3-3/4	19-1/2	7/16	20	210 LBS
A18	18	22	11	34	23-1/4	5-1/4	-	-	21	7/16	16	230 LBS
A19	**19	23	11-1/2	35-1/2	24-1/4	4-3/8	4-3/8	4-7/16	22	9/16	20	250 LBS
A20	20	24	12	37	25-1/4	5-3/4	-	-	23	7/16	16	270 LBS
A21	**21	25	12-1/2	38-1/2	26-1/4	4-3/4	4-3/4	4-7/8	24	9/16	20	290 LBS
A22	22	26	13	40	27-1/4	4-3/16	-	4-1/8	25-1/8	7/16	24	310 LBS
A24	24	28	14	43	32-1/8	4-1/2	-	-	27	7/16	24	395 LBS
A25	**25	29	14-1/2	44-1/2	33-1/8	5-1/2	5-5/8	5-5/8	28	9/16	20	450 LBS
A30	30	34	17	52	38-1/8	5-1/2	-	-	33	7/16	24	550 LBS

VALVE MODIFICATIONS

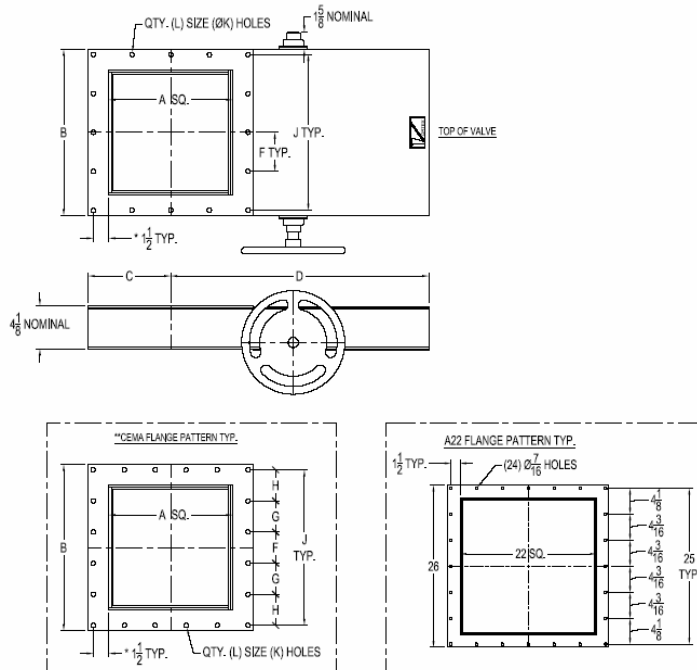
SC	304 STAINLESS STEEL BLADE AND GATE LINER, 440 STAINLESS STEEL ROLLERS, 304 OR 18-8 STAINLESS STEEL ROLLER STUD BOLTS.
MG	MAGNETIC RING AIR CYLINDER ACTIVATES MAGNETIC REED POSITION INDICATION SWITCH.
HT3	APPLICATIONS REQUIRING 250° F CONTINUOUS SERVICE TO 300° F INTERMITTENT SERVICE.
HT4	APPLICATIONS REQUIRING 400° F CONTINUOUS SERVICE TO 450° F INTERMITTENT SERVICE.
HT6	APPLICATIONS REQUIRING 550° F CONTINUOUS SERVICE TO 600° F INTERMITTENT SERVICE.
AR	BLADE MADE FROM AR PLATE TO HANDLE MORE ABRASIVE MATERIALS.
POT	POTENTIOMETER INDICATES BLADE POSITION BETWEEN FULL OPEN AND FULL CLOSED.

ACCESSORIES

- MANUAL 2 OR 3-POSITION LEVER
- NEMA 4, NEMA 7/9, OR ATEX RATED DOUBLE OR SINGLE SOLENOIDS
- ELECTRIC, AIR, HAND OR CHAINWHEEL, OR HYDRAULIC ACTUATION
- MECHANICAL, PROXIMITY, OR MAGNETIC REED INDICATION SWITCHES
- VENTED BALL VALVE
- AVAILABLE IN CARBON STEEL ONLY

VORTEX® AGGREGATE GATE™ (SIDE MOUNT ACTUATOR) DIMENSIONAL INFORMATION

All dimensions are in inches.



Information subject to change without notice.

ITEM ID	A	B	C	D	E	F	G	H	J	K	L
AHW06	6	10	5	16	11	4-1/2	-	-	9	7/16	8
AHW07	7	11	5-1/2	17	11-3/8	5	-	-	10	7/16	8
AHW08	8	12	6	19	13	5-1/2	-	-	11	7/16	8
AHW09	9	13	6-1/2	20-1/2	13-7/8	3	-	-	12	7/16	16
AHW10	10	14	7	22	15	3-1/4	-	-	13	7/16	16
AHW11	11	15	7-1/2	23-1/2	15-15/16	3-1/2	-	-	14	7/16	16
AHW12	12	16	8	25	17	3-3/4	-	-	15	7/16	16
AHW13	**13	17	8-1/2	26-1/2	18	5-1/4	-	5-1/8	15-1/2	7/16	12
AHW14	14	18	9	28	19-1/4	4-1/4	-	-	17	7/16	16
AHW15	**15	19	9-1/2	29-1/2	20-1/4	3-1/2	3-1/2	3-1/2	17-1/2	7/16	20
AHW16	16	20	10	31	21-1/4	4-3/4	-	-	19	7/16	16
AHW17	**17	21	10-1/2	32-1/2	22-1/4	4	4	3-3/4	19-1/2	7/16	20
AHW18	18	22	11	34	23-1/4	5-1/4	-	-	21	7/16	16
AHW19	**19	23	11-1/2	35-1/2	24-1/4	4-3/8	4-3/8	4-7/16	22	9/16	20
AHW20	20	24	12	37	25-1/4	5-3/4	-	-	23	7/16	16
AHW21	**21	25	12-1/2	38-1/2	26-1/4	4-3/4	4-3/4	4-7/8	24	9/16	20
AHW22	22	26	13	40	27-1/4	4-3/16	-	4-1/8	25-1/8	7/16	24
AHW24	24	28	14	43	32-1/8	4-1/2	-	-	27	7/16	24
AHW25	**25	29	14-1/2	44-1/2	33-1/8	5-1/2	5-5/8	5-5/8	28	9/16	20
AHW30	30	34	17	52	38-1/8	5-1/2	-	-	33	7/16	24

VALVE MODIFICATIONS

SC	304 STAINLESS STEEL BLADE AND GATE LINER, 440 STAINLESS STEEL ROLLERS, 304 OR 18-8 STAINLESS STEEL ROLLER STUD BOLTS.
MG	MAGNETIC RING AIR CYLINDER ACTIVATES MAGNETIC REED POSITION INDICATION SWITCH.
HT3	APPLICATIONS REQUIRING 250° F CONTINUOUS SERVICE TO 300° F INTERMITTENT SERVICE.
HT4	APPLICATIONS REQUIRING 400° F CONTINUOUS SERVICE TO 450° F INTERMITTENT SERVICE.
HT6	APPLICATIONS REQUIRING 550° F CONTINUOUS SERVICE TO 600° F INTERMITTENT SERVICE.
AR	BLADE MADE FROM AR PLATE FOR HANDLING MORE ABRASIVE MATERIALS.
POT	POTENTIOMETER INDICATES BLADE POSITION BETWEEN FULL OPEN AND FULL CLOSED.

ACCESSORIES

- MANUAL 2 OR 3-POSITION LEVER
- NEMA 4, NEMA 7/9, OR ATEX RATED DOUBLE OR SINGLE SOLENOIDS
- ELECTRIC, AIR, HAND OR CHAINWHEEL, OR HYDRAULIC ACTUATION
- MECHANICAL, PROXIMITY, OR MAGNETIC REED INDICATION SWITCHES
- VENTED BALL VALVE
- AVAILABLE IN CARBON STEEL ONLY

Copyright©2006 Salina Vortex® Corporation. All Rights Reserved. A09-2006.

For more information, please contact Vortex® at 1.888.829.7821 or visit our website at www.vortexvalves.com