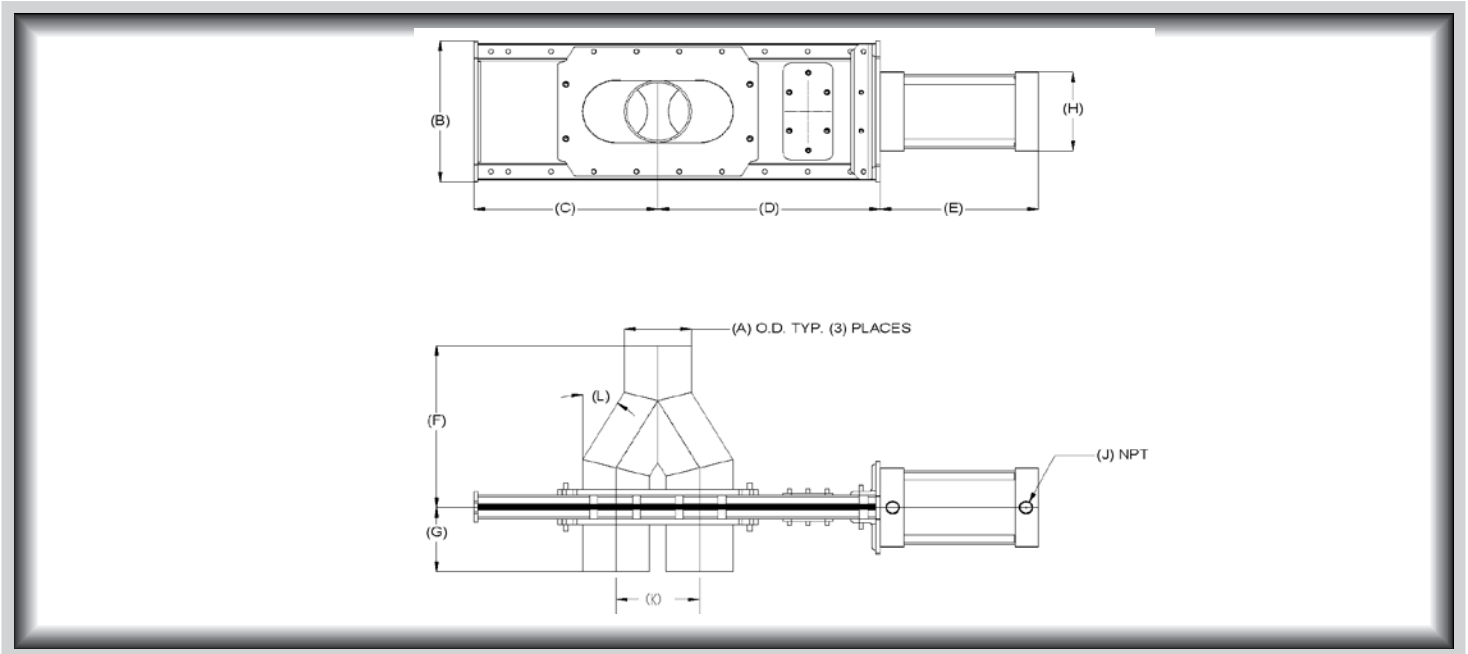




## VORTEX® 2-WAY WYE LINE DIVERTER™ DIMENSIONAL INFORMATION



Tube Model	A	B	C	D	E	F	G	H	J	K	L
DR2-2(XX)	2	7 1/8	6 1/2	8 1/4	6 1/4	7 1/4	4 1/4	3 1/2	3/8	2 1/2	30
DR2.5-2(XX)	2 1/2	8 1/8	8 1/2	11	8	8	4 1/4	4 1/8	1/2	3 1/2	30
DR3-2(XX)	3	8 1/8	8 1/2	11	8	8 3/4	4 1/4	4 1/8	1/2	3 1/2	30
DR4-2(XX)	4	9 1/8	11	13 3/8	9 1/2	10 1/2	4 1/4	5 1/8	1/2	5	30
DR5-2(XX)	5	10 1/8	13	15 1/2	10 3/4	12 3/4	5 1/4	5 1/2	1/2	6	30
DR6-2(XX)	6	11 1/8	15	17 1/2	11 3/4	14	5 1/4	5 1/2	1/2	7	30

Pipe Model	A	B	C	D	E	F	G	H	J	K	L
DR2-2(XX)-PXX*	2 3/8	8 1/8	8 1/2	11	8	10 1/4	4 3/4	4 1/8	1/2	3 1/2	30
DR2.5-2(XX)-PXX*	2 7/8	8 1/8	8 1/2	11	8	10 1/4	5 1/8	4 1/8	1/2	3 1/2	30
DR3-2(XX)-PXX*	3 1/2	9 1/8	11	13 3/8	9 1/2	12 7/8	6 1/4	5 1/8	1/2	5	30
DR4-2(XX)-PXX*	4 1/2	10 1/8	13	15 1/2	10 3/4	13 7/8	6 1/4	5 1/2	1/2	6	30
DR5-2(XX)-PXX*	5 5/8	11 1/8	15	17 1/2	11 3/4	15 1/4	6 1/2	5 1/2	1/2	7	30

All dimensions are in inches, Information subject to change without notice.

(XX) Material of construction, aluminum (AL), carbon steel (CS), or stainless steel (SS).

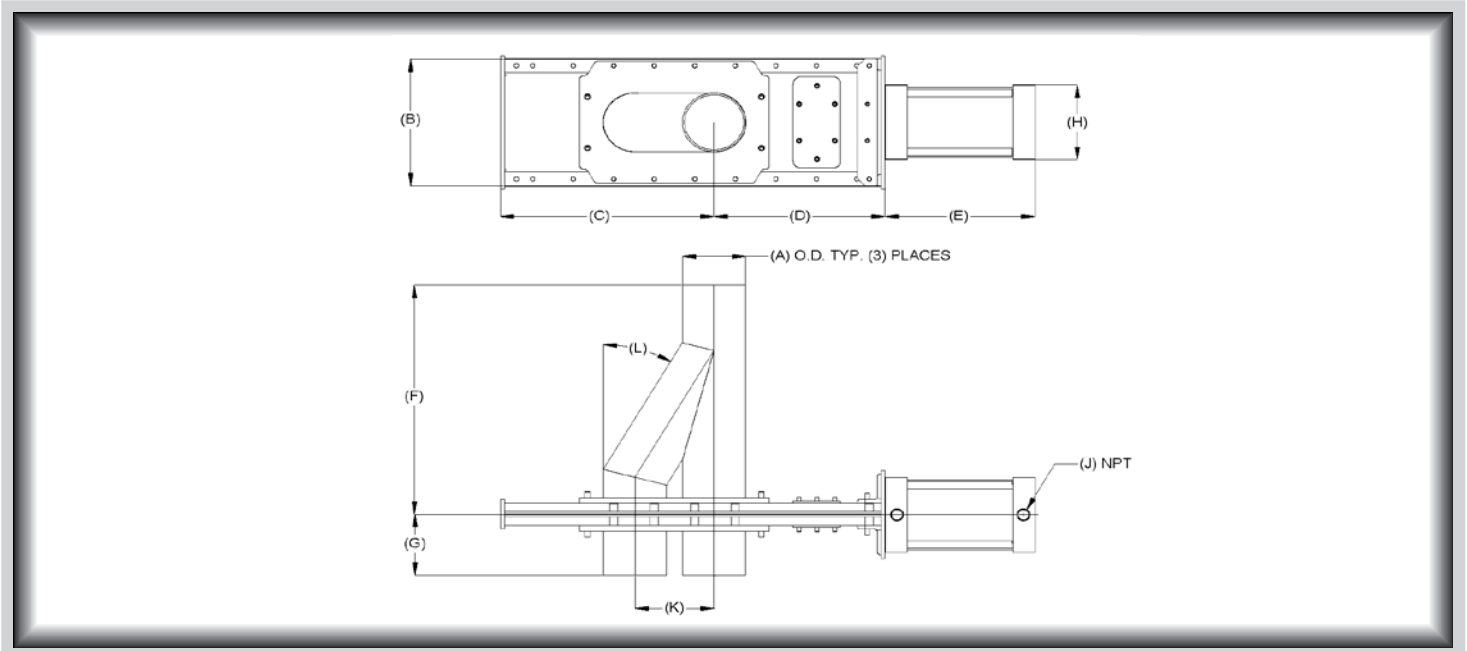
\*Select pipe schedule 10, 20, or 40.



# Valves

Handling the world's dry bulk solids®

## VORTEX® 2-WAY WYE LINE DIVERTER™ DIMENSIONAL INFORMATION



Tube Model	A	B	C	D	E	F	G	H	J	K	L
DR2-2(XX)-SL	2	7 1/8	7 3/4	7	6 1/4	9 3/4	4 1/4	3 1/2	3/8	2 1/2	30
DR2.5-2(XX)-SL	2 1/2	8 1/8	10 1/4	9 1/4	8	10 1/4	4 1/4	4 1/8	1/2	3 1/2	30
DR3-2(XX)-SL	3	8 1/8	10 1/4	9 1/4	8	11 3/4	4 1/4	4 1/8	1/2	3 1/2	30
DR4-2(XX)-SL	4	9 1/8	13 1/2	10 7/8	9 1/2	15 3/4	4 1/4	5 1/8	1/2	5	30
DR5-2(XX)-SL	5	10 1/8	16	12 1/2	10 3/4	17 3/4	5 1/4	5 1/2	1/2	6	30
DR6-2(XX)-SL	6	11 1/8	18 1/2	14	11 3/4	20 1/4	5 1/4	5 1/2	1/2	7	30

Pipe Model	A	B	C	D	E	F	G	H	J	K	L
DR2-2(XX)-SL-PXX*	2 3/8	8 1/8	10 1/4	9 1/4	8	13 1/4	4 3/4	4 1/8	1/2	3 1/2	30
DR2.5-2(XX)-SL-PXX*	2 7/8	8 1/8	10 1/4	9 1/4	8	13 1/8	6 1/4	4 1/8	1/2	3 1/2	30
DR3-2(XX)-SL-PXX*	3 1/2	9 1/8	13 1/2	10 7/8	9 1/2	17 1/4	6 1/4	5 1/8	1/2	5	30
DR4-2(XX)-SL-PXX*	4 1/2	10 1/8	16	12 1/2	10 3/4	19 1/4	6 1/4	5 1/2	1/2	6	30
DR5-2(XX)-SL-PXX*	5 5/8	11 1/8	18 1/2	14	11 3/4	21 1/4	6 1/2	5 1/2	1/2	7	30