



Valves

Handling the world's dry bulk solids®

VORTEX® TITAN SERIES ABRASION RESISTANT SLIDE GATE

The Vortex® Titan Series Abrasion Resistant Slide Gate is as robust as the Vortex® Aggregate Gate™, but has the superior dust-tight seal of the Vortex® Roller Gate. The Titan Slide Gate is the perfect gate for abrasive materials such as whole grains, coal, metal powders or minerals. The heavy duty valve frame construction is based on formed carbon steel channel with a beveled, abrasion resistant steel blade and liner. A displacement pocket on the closing end of the valve assists in closing when material is present.

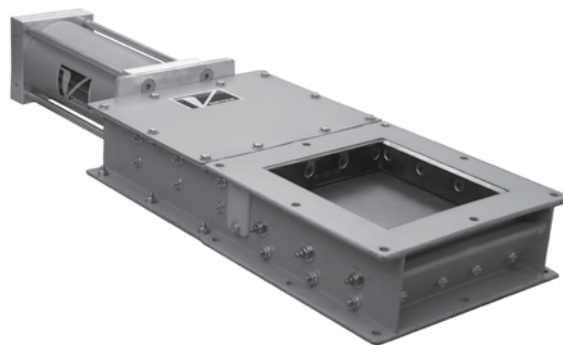
Vortex® Titan Series Abrasion Resistant Slide Gate Features

- Heavy Duty Carbon Steel Construction
- Hardened Steel Cam Adjustable Rollers with Grease Fittings
- Replaceable AR400 Liners Protect Seals from Abrasion
- Accurate Metering of Material with Optional Metering Controls
- Removeable Seal Access Covers for Inline Maintenance
- Air Cylinder Model Includes Magnetic Piston



Valve Specifications

Size/Bore Options	6" to 30" Square or Rectangular
Media	Powders, Aggregates, Coal, Minerals
Connection Options	ANSI 150LB, DIN/PN10/PN40, JIS/10K, Custom Flanges Square or Rectangular
Media Temperature	Up to 400°F continuous to 450°F intermittent
Media Pressure	0 barg, Gravity Flow Only
Metal Construction Options	Carbon Steel
Seal/Seat Material Options	PET, Glass Filled Teflon
Drive/Actuation Options	Double Acting Air Cylinder and Solenoid Operated Air Control Valve, Electric Actuator, Hydraulic, Hand Wheel, or Chainwheel
Position Confirmation	Magnetic Reed Switch, Proximity Switch,
Compliance/Approvals	CE, ATEX
Industry Use	Plastics, Petrochemicals, Chemicals, Minerals, Power Gen, Agriculture, Mining



Application Specific Modifications

SC	Product contact areas are made of 304 stainless steel. Rollers are 440 stainless steel and roller stud bolts are 304 or 18-8 stainless.
HT4	Modifications are made allowing 400°F continuous to 450°F intermittent service.
SB	Bonnet is manufactured with solid covers and has a gasket. (Allows the valve to accept air purge.)
CC	Clear power covers are provided for the observation of gate blade position.
POT	Electrical signal from potentiometer is used for indicating position of the gate blade between full open and full closed.