



Valves

Handling the world's dry bulk solids®

VORTEX® DUAL CYLINDER ROLLER GATE™

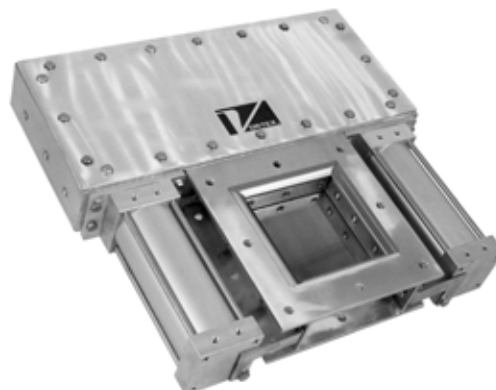
The Vortex® Dual Cylinder Roller Gate™ offers quality features at an economical price. This gate is the best choice for handling dry material in gravity flow applications where positive material shut-off and dust tight sealing are required in compact locations. The Vortex® Dual Cylinder Roller Gate™ is available in a wide variety of configurations, including rectangular sizes and round inlet/outlet transitions.

Vortex® Dual Cylinder Roller Gate™ Features

- Narrow Profile
- Positive Seal of Dust and Fine Powders
- Seals Protected from Abrasion
- Accurate Metering of Material with Optional Metering Controls
- Seal Access Ports for In-Line Seal Replacement
- Air Cylinder Model Includes Magnetic Piston



Valve Specifications	
Size/Bore Options	6" to 30" Square, Round, or Rectangular
Media	Powder, Pellets, Granulars
Connection Options	SVC Flange, CEMA Flange, and/or Custom Flanges
Media Temperature	Up to 180°F continuous to 250°F intermittent service, Modifications allow up to 400°F continuous to 450°F intermittent service
Media Pressure	0 barg, Gravity Flow Only
Metal Construction Options	304 or 316L Stainless Steel, Aluminium, and/or Carbon Steel. Material contact is 304 or 316L Stainless Steel
Seal/Seat Material Options	Nylon, PET, UHMW, Glass Filled Teflon, Rubber, and/or Silicon
Drive/Actuation Options	Double Acting Air Cylinder and Solenoid Operated Air Control Valve
Position Confirmation	Magnetic Reed Switch, Proximity Switch, or Mechanical Switch
Compliance/Approvals	CE, ATEX, FDA
Industry Use	Plastics, Petrochemicals, Chemicals, Foods, Minerals, Textiles, Agriculture



Application Specific Modifications	
S	Material contact is 316L stainless steel.
HS	Hardened steel rollers replace standard nylon rollers and bonnet seal protector is installed.
HT3	Modifications are made allowing 250°F continuous to 300°F intermittent service.
HT4	Modifications are made allowing up to 400°F continuous to 450°F intermittent service.
WS1	Slide blade is electro-polished. Polyethylene Terephthalate (PET) pressure plate seals are used to replace nylon.
SB	Bonnet is manufactured with solid, gasket covers. (Allows the valve to accept air purge.)