



Valves

Handling the world's dry bulk solids®

VORTEX® AGGREGATE GATE™

The Vortex® Aggregate Gate™ is designed to meet the demanding applications associated with handling material such as sand, gravel, whole grains, and coal. The narrow profile, choice of actuators, and custom rectangular size make this slide gate adaptable to most existing installations. Optional round inlets or outlets flanges and dust return pans are also available. The Aggregate Gate™ is designed to eliminate problems, increasing production, while decreasing labor and equipment costs.

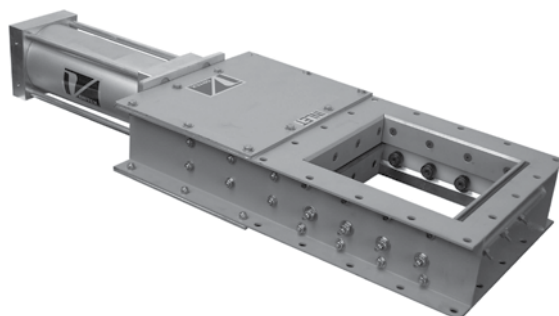
Vortex® Aggregate Gate™ Features

- Hardened Steel Rollers with Grease Fittings
- Designed for Tough Abrasive Handling
- Seals Protected from Abrasion
- Accurate Metering of Material with Optional Metering Controls
- Easy Installation and Maintenance
- Air Cylinder Model Includes Magnetic Piston



Valve Specifications

Size/Bore Options	6" to 24" Square, Rectangular, or Round
Media	Aggregates, Granulars, Coal, Minerals
Connection Options	ANSI 150LB, DIN/PN10/PN40, JIS/10K, Custom Flanges Square or Rectangular
Media Temperature	Up to 180°F continuous to 250°F intermittent service, Modifications allow up to 550°F continuous to 600°F intermittent service
Media Pressure	0 barg, Gravity Flow Only
Metal Construction Options	304 Stainless Steel, Carbon Steel, and/or Abrasion Resistant Carbon Steel
Seal/Seat Material Options	Nylon, PET, Glass Filled Teflon, and/or Silicone Bronze
Drive/Actuation Options	Double Acting Air Cylinder and Solenoid Operated Air Control Valve, Electric Actuator, Hydraulic, Hand Wheel, or Chainwheel
Position Confirmation	Magnetic Reed Switch, Proximity Switch, Mechanical Switch
Compliance/Approvals	CE, ATEX
Industry Use	Plastics, Petrochemicals, Chemicals, Minerals, Textiles, Agriculture, Mining



Application Specific Modifications

SC	Slide blade and frame are 304 stainless steel. Rollers are 440 stainless steel and roller stud bolts are 304 or 18-8 stainless steel.
HT3	Modifications are made allowing 250°F continuous to 300°F intermittent service.
HT4	Modifications are made allowing 400°F continuous to 450°F intermittent service.
HT6	Modifications are made allowing 550°F continuous to 600°F intermittent service.
AR	Slide blade is made of AR plate for handling more abrasive materials.
DS	The dust seal will help to eliminate or reduce dusting to atmosphere. The enhanced bonnet seal option would be preferred for handling rocks with dust present.
RP	Return pan.